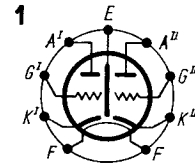


T.	Image	Image	$U_f$	$I_f$	$U_a$	$U_g$	$I_a$	$S$	$R_i$	$\mu$	$R_k$	$f$	$U_f/k$	$I_k$	$P_a$
			V	A	V	V	mA	mA/V	k $\Omega$	V/V	$\Omega$	MHz	V	mA	W
2 C 51 18 C 51 <sup>1)</sup> 407 A <sup>1)</sup>	int SER int	1 1 2	6,3	0,3÷0,35	130	-1,5	7,6	5,4	6,5	35	200	800	90	18	1,5
			18	0,1	150	-2	8,2	5,6	6,5						
			20/40	0,1/0,05	300	maximum									

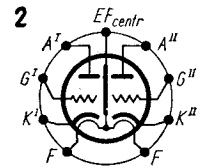
Equivalents 2 C 51

CK 5670 <sup>2)</sup>	Ray	6 H 3 II-E <sup>3)</sup>	CCCP
CK 5670-WA <sup>2)</sup>	Ray	6 H 3 II-H <sup>2)</sup>	CCCP
GL 5670 <sup>2)</sup>	GE	396 A	WE
2 C 51 L <sup>1)</sup>	SER	5670 <sup>2)</sup>	int
6 CC 42	Tes	5670-WA <sup>2)</sup>	amer
6 H 3 II	CCCP	6385	amer
		6854	amer

T.	$C_g$	$C_a$	$C_{g1a}$	$C_{a1a}$
	pF	pF	pF	pF
2 C 51 407 A	2,2	1	1,3	0,1

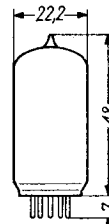
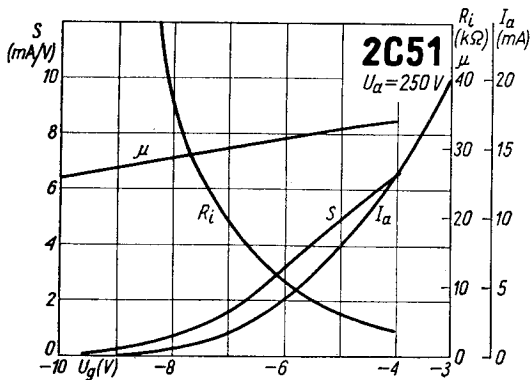
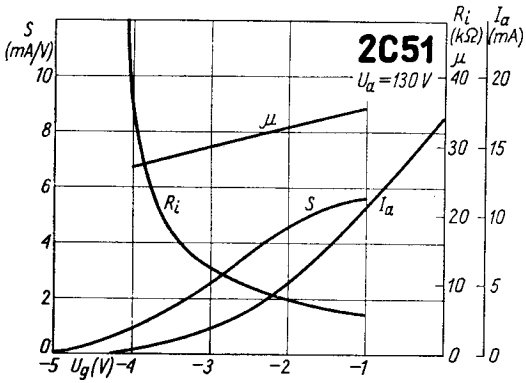
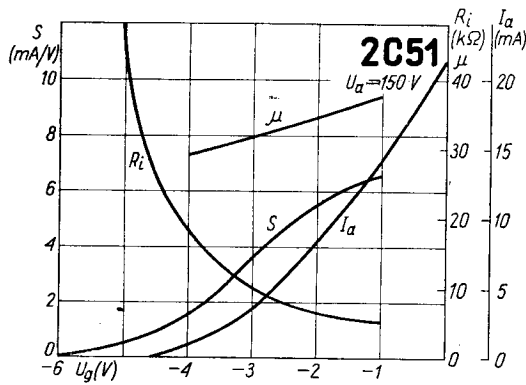


2C51



407A

<sup>1)</sup> vide \*4, a,b,c= 10.000, d,e,f,g ( $U_f = 6,3; 18, 20/40 V \pm 5\%$ )  
<sup>2)</sup> vide \*4, a,b,c= 10.000, f,g ( $U_f = 6,3 V \pm 10\%$ )  
<sup>3)</sup> vide \*4, a, b, c=5000, e; <sup>4)</sup> Impulse operat.



2C51  
18C51  
407A

